

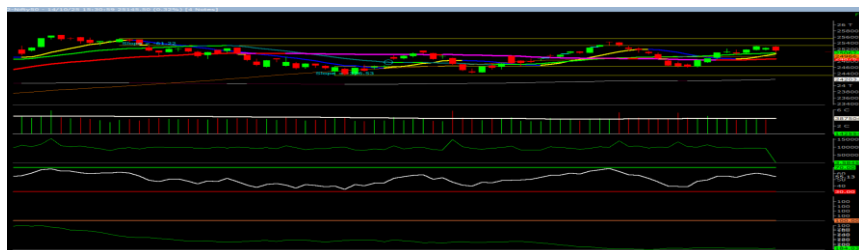
Wednesday, 15th Oct 2025

Indian Indices	Last Price	(%) Chg
NSE	25145.50	-0.32
BSE	82029.98	-0.36
World Indices	Last Price	(%) Chg
Dow Jones	46270.46	0.44
Nasdaq	22521.70	-0.76
Nikkei	47463.31	1.31
Hang Seng	25703.31	1.03
FTSE	9452.77	0.10
Commodity	Last Price	(%) Chg
GOLD(\$/ounce)	4202.56	0.89
Silver (\$/Ounce)	51.22	1.18
Crude (\$/BBL)	58.60	-0.17
Aluminium spot (\$/mt)	2746.10	-0.86
Copper SPOT (\$/mt)	10632.40	0.42
Zinc (\$/MT)	2932.65	-0.51
Natural gas \$/MMBtu	3.01	-0.49
Currency	Last Price	(%) Chg
USDINR	88.27	-0.41
EURINR	102.85	-0.18
Bond	Last Price	(%) Chg
India 10 Yr Bond yield	6.50	-0.17

52 Wk High			52 Wk Low		
Company	Close Price	52 Wk High	Company	Close Price	52 Wk Low
BAJFINANCE	1018	1042	BLUEDART	5457	5447
ETERNAL	347	352	CGCONSUM	281	278
HBLENG	915	944	KNRCONS	185	185
MCX	9404	9457	WESTLIFE	608	603
RBLBANK	291	299	--	--	--

Source: Money Control (BSE 500)

Market Technical Outlook



The Nifty opened higher but was unable to sustain the initial gains as selling pressure emerged, dragging the index lower to close in the red. On the daily chart, a bearish candle has formed; however, prices continue to trade comfortably above the 10-day SMA (25,041), 20-day SMA (25,067), and 50-day SMA (24,876), indicating that the broader undertone remains positive. In the upcoming session, if Nifty sustains above 25,200, it may extend its move toward 25,240–25,325 levels, while on the downside, support is placed at 25,045–25,010 levels.

We still continue to maintain our stance that current price action gives an early indication that the correction within the broader uptrend has likely ended, and the continuation of the uptrend is resuming. Traders are therefore advised to adopt a cautiously positive stance, with stock-specific opportunities likely to remain in focus.

Foreign Institutional Investments (FII's) Activities

Name of Segment	Net Buyer/seller	Rs In Cr
Index Futures	Net Seller	-835.93
Stock Futures	Net Seller	-2501.69
Net Future Position	Net Seller	-3337.62
Index Options	Net Seller	-1538.83
Stock Options	Net Buyer	181.84
Net Options Position	Net Seller	-1356.99
FII In cash Segment	Net Seller	-240.10
DII In cash Segment	Net Buyer	2333.42
Net Cash Position	Net Buyer	2093.32

Guru Call: From the expert's desk

Company	Reco Date	Reco Price (Buy on dips)	High till date	Return%
Aditya Birla Capital Ltd	13-Aug-21	124	292	135.4%
Avenue Supermarts Ltd.	31-Jul-17	899	5900	556.2%
Axis Bank Ltd.	10-Apr-18	519	1339	157.9%
Bajaj Finance Ltd	20-Apr-22	7033	9780	39.1%
Bajaj Finserv Ltd	1-Nov-16	3417	21350	245.8%
Bajaj Holdings And Investment Ltd	19-May-16	1499	14740	883.3%
CDSL	17-Sep-20	486	1734	718.5%
Cipla Ltd	20-Mar-17	597	1702	185.1%
Colgate Palmolive	16-Sep-19	1314	3890	196.1%
D. P. Abhushan Ltd	20-Apr-22	396	1927	386.6%
Dabur India	22-Oct-19	466	672	44.2%
DLF Ltd	10-Apr-19	194	967	398.4%
Dr Reddy	4-Aug-20	4530	7105	56.8%
Emami Limited	26-Jun-19	290	855	194.8%
Fortis	14-Jul-20	127	983	674.1%
Godrej Consumer Products Limited	16-Jun-20	634	1541	143.1%
GMDC Ltd	29-Aug-25	400	638	59.5%
HDFC Asset Management Company Ltd.	19-Dec-18	1573	5869	273.1%
HDFC Bank Limited	10-Nov-16	639	2037	218.7%
HDFC Life Insurance Co Ltd	19-Jan-18	485	820	69.1%
Hero Motocorp Ltd	29-Sep-20	3175	6246	96.7%
Hindustan Unilever Ltd.	13-Nov-17	1291	3035	135.1%
ICICI Bank Ltd.	6-Apr-18	279	1500	437.6%
ICICI Lombard General Insurance	19-Sep-19	1155	2301	99.2%
ICICI Prudential Life Insurance Company Ltd.	28-Jun-18	376	796	111.7%
Kotak Mahindra Bank Ltd	10-Nov-16	822	2301	179.9%
Marico Ltd.	4-Apr-18	325	745	129.2%
Maruti Suzuki India Ltd	13-Aug-20	5989	14401	140.4%
NSDL	07-Aug-25	900	1425	58.33%
Oberoi Realty Ltd.	23-Nov-17	509	2343	360.3%
Phoenix Mills Limited	7-Jul-19	655	2068	531.4%
Poonawalla Fincorp Ltd	13-Aug-21	175	519	196.5%
Procter & Gamble Hygiene & Health Care	13-Aug-21	12870	19250	49.5%
Reliance	22-Apr-20	1351	3216	138.1%
SBI Life	20-May-20	715	1936	170.8%
State Bank of India	3-Feb-21	336	912	171.4%
Tata motors	20-Apr-22	441	1179	167.3%
Trent Ltd.	19-Dec-18	348	8345	2297.9%
Ultratech Cement Ltd.	19-Dec-18	4085	12714	211.2%
UTI Asset Management Company Ltd	13-Aug-21	1044	1494	43.1%
Voltas Ltd.	27-Mar-18	614	1944	216.6%
Whirlpool Of India Ltd.	7-Dec-16	872	2787	219.6%

Securities in Ban For Trade Date: 15-10-2025

RBLBANK, SAMMAANCAP

Bulk Deals (BSE)

N.A

Bulk Deals (NSE)

Deal Date	Scrip Name	Client Name	Deal Type	Quantity	Price
14-Oct-25	ATALREAL	CULLINAN OPPRTS FUND VCC-CULLINAN OPPORTUNITIES	BUY	1600000	22.53
14-Oct-25	AWFIS	HSBC MUTUAL FUND	BUY	918300	585
14-Oct-25	MBEL	360 ONE ASSET MANAGEMENT LIMITED	BUY	521620	404.41
14-Oct-25	AWFIS	QRG INVESTMENTS AND HOLDINGS LIMITED	SELL	2407800	585.14

Note- Executed on 14th Oct 2025. Bulk Deal Buy/Sell done by fund house is considered.

Research Analyst Registration No.

INH000002764

Contact

SMS: 'Arihant' to 56677

Website

www.arihantcapital.com

mail Id

arihant.research@arihantcapital.com

**Arihant is Forbes Asia's '200 Best under a \$Billion' Company
'Best Emerging Commodities Broker' awarded by UTV Bloomberg**

Disclaimer: This document has been prepared by Arihant Capital Markets Limited (hereinafter called as Arihant) and its subsidiaries and associated companies. This document does not constitute an offer or solicitation for the purchase and sale of any financial instrument by Arihant. Receipt and review of this document constitutes your agreement not to circulate, redistribute, retransmit or disclose to others the contents, opinions, conclusion, or information contained herein. This document has been prepared and issued on the basis of publicly available information, internally developed data and other sources believed to be reliable. Whilst meticulous care has been taken to ensure that the facts stated are accurate and opinions given are fair and reasonable, neither the analyst nor any employee of our company is in any way is responsible for its contents and nor is its accuracy or completeness guaranteed. This document is prepared for assistance only and is not intended to be and must not alone be taken as the basis for an investment decision. All recipients of this material should before dealing and or transacting in any of the products referred to in this material make their own investigation, seek appropriate professional advice. The investments discussed in this material may not be suitable for all investors. The recipient alone shall be fully responsible/are liable for any decision taken on the basis of this material. Arihant Capital Markets Ltd (including its affiliates) or its officers, directors, personnel and employees, including persons involved in the preparation or issuance of this material may; (a) from time to time, have positions in, and buy or sell or (b) be engaged in any other transaction and earn brokerage or other compensation in the financial instruments/products discussed herein or act as advisor or lender/borrower in respect of such securities/financial instruments/products or have other potential conflict of interest with respect to any recommendation and related information and opinions. The said persons may have acted upon and/or in a manner contradictory with the information contained here and may have a position or be otherwise interested in the investment referred to in this document before its publication. The user of this report assumes the entire risk of any use made of this data/report. Arihant especially states that it has no financial liability, whatsoever, to the users of this report.

Arihant Capital Markets Ltd

#1011 Solitaire Corporate Park Building No.10 1st Floor
 Andheri Ghatkopar Link Road Chakala Andheri (E) Mumbai-400093
 T. 022-42254800. Fax: 022-42254880
www.arihantcapital.com